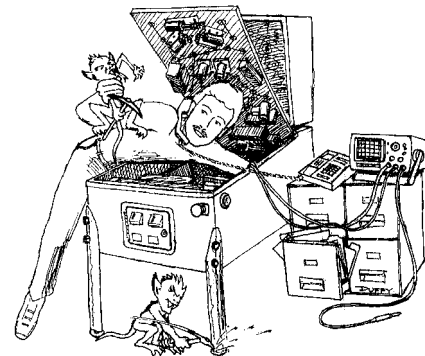


Service Bulletin N° 97



Joe Blackwell
Technical Support Manager

Eric Winston
Technical Support Engineer

Jay Alfer
Technical Support Administrator

TO: Parts & Service Managers

DATE: April 8, 1997

SUBJ: X-Wing Motor Bushing



Symptom:

Sometimes at the start of the X-Wing Multiball Feature with the ball loaded into the Cannon, the X-Wing Assembly may not move. This does not necessarily mean the motor has failed; it is simply in a "stuck-state." The *slightest tap or nudge* to the game will start the X-Wing to move again. **If you should experience this symptom please refer to the procedure below.**

Explanation:

Due to slight variances in spotting the X-Wing Assembly while mounting it to the playfield, the shaft bushings (**See Fig. 1**) can cause some binding to the motor shaft. Increasing the inside diameter of *either* shaft bushing (**See Fig. 1A & 1B**) will correct this problem. For simplicity in this correction we recommend fixing the bottomshaft bushing (**See Fig. 1A**). (**See Note below.**)

Procedure:

- 1 Locate the X-Wing Motor Assembly Bottom Shaft Bushing, 545-5783-00, on the bottom side of the playfield (**See Fig. 1A**).
- 2 Locate and remove the Retaining Clip (E-Ring), 270-5002-00, located at the base of the X-Wing Shaft (**See Fig. 1C**).
- 3 Remove the three (3) #6-32 X 1/2" HWH TF Mounting Screws, 237-5924-00, securing the Bushing to the X-Wing Motor Bracket (**See Fig. 1D**).
- 4 Remove the Bushing from X-Wing Motor Bracket (**See Fig. 1A**). Using a #G or a 6.6mm Drill Bit, enlarge the existing Bushing Shaft Hole. Reassemble.

Note:

As stated, there are 2 X-Wing Shaft Bushings, one (1) on the X-Wing Motor Assembly (**See Fig. 1A**) and one (1) on the Upper Motor Shaft on the playfield side (**See Fig. 1B**). **All games made after Serial N° 138041 have been modified and should not experience this "stuck-state" symptom.** The bushing mounted on the playfield side will have a black stripe indicating this (**See Fig. 1B**). **Unless your game is experiencing the above symptoms disregard the above procedure.**

Manual Update:

The manual pointed to the wrong bushing. The bushing referenced, 545-5783-00, is mounted on the bottom end of the motor shaft next to the motor. The upper bushing the "manual points to" is 545-5192-00 & is not included with the X-Wing Motor Assy., 500-6175-00-56.

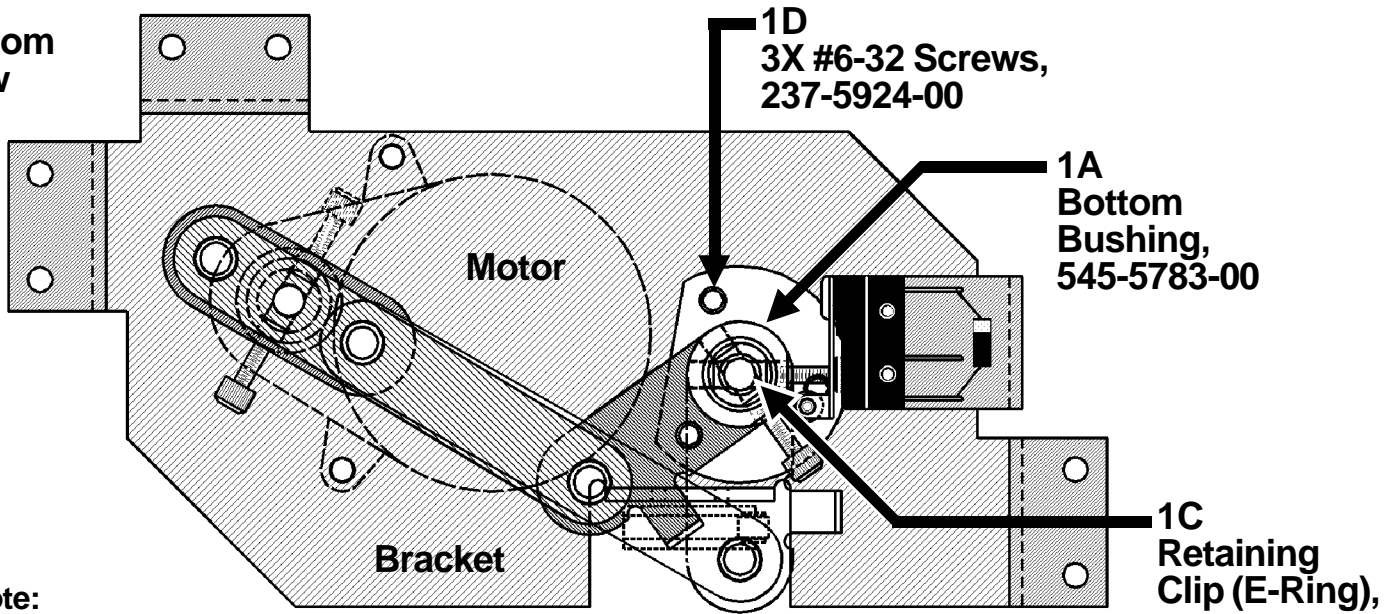
Fig. 1 is shown on Page 2.

• 1990 Janice Avenue • Melrose Park, IL 60160 • Tel 708-345-7700 or Toll-Free (USA/Canada) 1-800-542-5377 • Fax 708-345-7889 •

Fig. 1

X-Wing Drive (Motor) Assembly, 500-6175-00-56 Bushing Reference

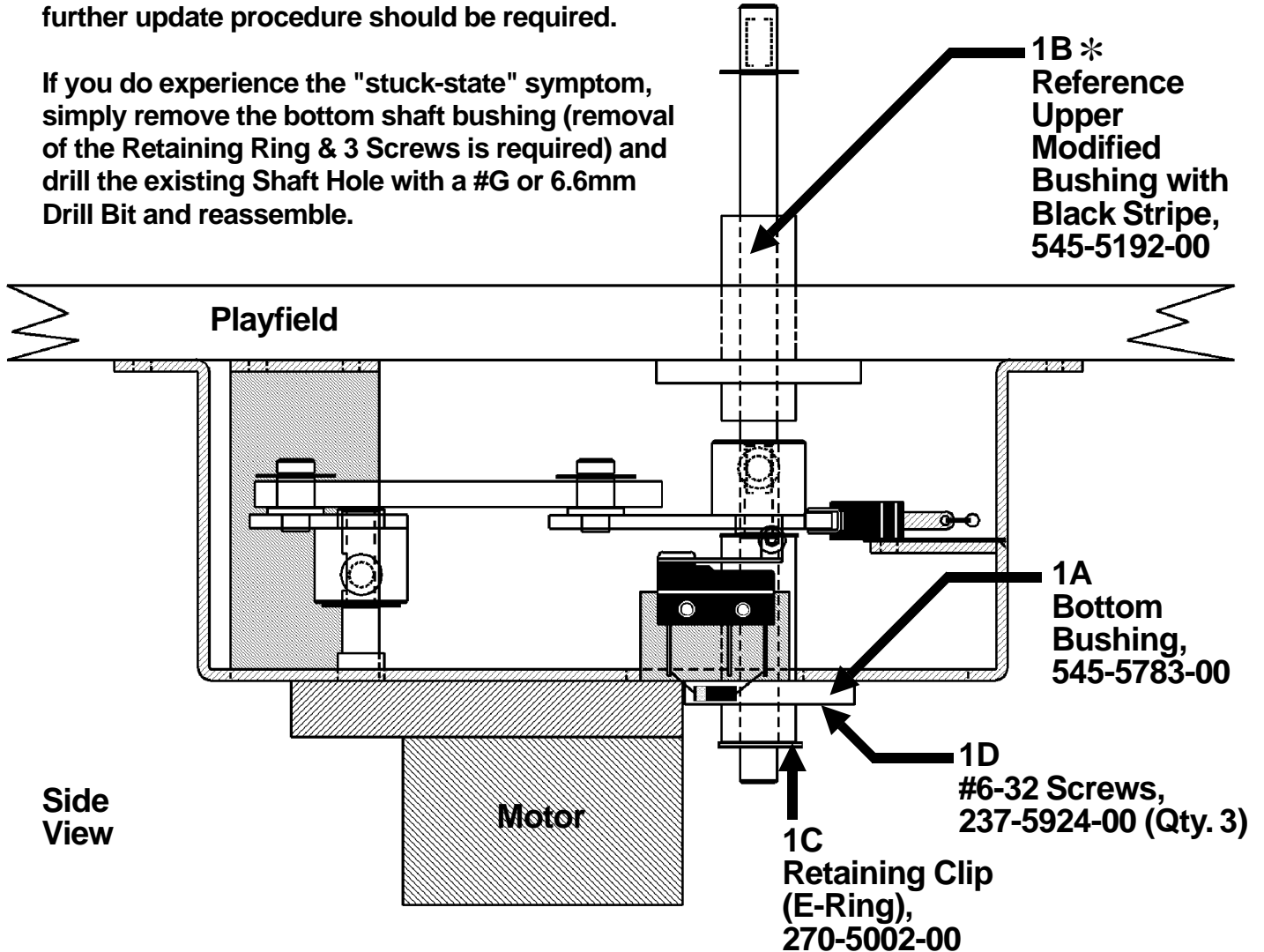
Bottom View



* Note:

If the Upper Bushing has a black stripe, you should not experience any "stuck-state" symptom and no further update procedure should be required.

If you do experience the "stuck-state" symptom, simply remove the bottom shaft bushing (removal of the Retaining Ring & 3 Screws is required) and drill the existing Shaft Hole with a #G or 6.6mm Drill Bit and reassemble.



Side View