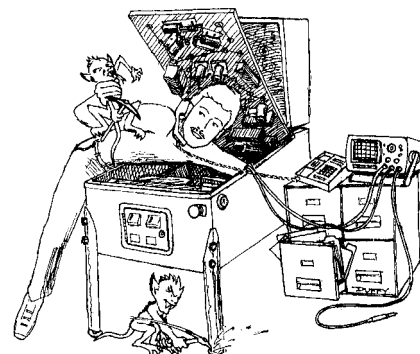




Nº 124 SERVICE BULLETIN



| | | | | | | |
|---|---------------------------------------|--|--|---|---|--|
| Joe Blackwell Director, Parts Sales & Technical Support | Susan White Parts Sales Manager | Tashia Miles Customer Service Representative | Patty Schrap Parts Stockroom Manager | Jim Thornton Technical Support Engineer | Chas Siddiqi Technical Support Engineer | Jay Alter Technical Support Doc. Administrator |
|---|---------------------------------------|--|--|---|---|--|

TO: Parts & Service Managers

DATE: March 16, 2001

Sharkey's
SHOOTOUT and



SUBJ: Software Update: Replay Bug Fix for
Sharkeys Shootout & High Roller Casino

Symptom:

Customers complain that the *game does not give replays*. You find that the **Replay Level** is **very high** and unachievable by most players (e.g. 880,000,000). **Audit 19, Replay Percent**, is very high and incorrect (e.g. 204%).

NO REPLAYS = LESS REVENUE



Explanation:

There is a problem with the way the **Replay Level** is adjusted in software. Normally, if customers are achieving replays, thus increasing the **Replay Percent**, the game will continue to **raise the Replay Level** in increments of 10 million to decrease the number of replays that are being achieved. **This is how auto percentaging works**. The problem is that as the **Replay Level** goes up and the **Replay Percent** goes down, and the game has reached it's *Optimum Percentage Value*, the **Replay Level** crashes to 50 million ... rather than decreasing it gradually. This makes it possible for just about anyone to achieve replays causing the replay percentage to go extremely high, which causes the game to keep raising the **Replay Level** well beyond what most players could ever achieve. If not corrected, the cycle will just continue over and over.

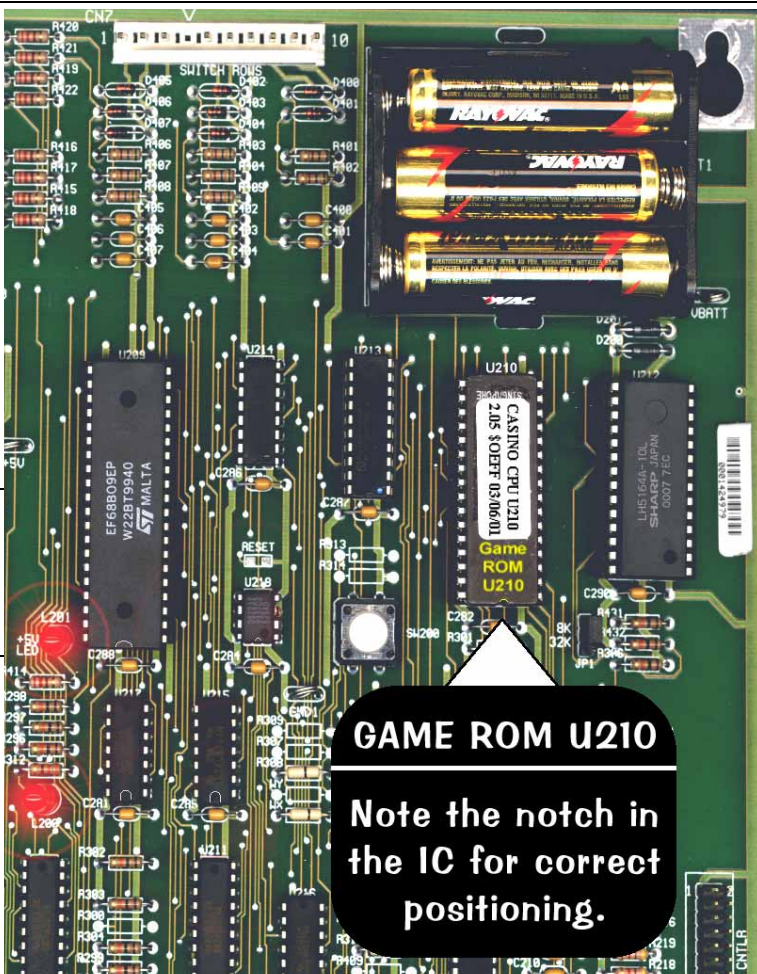
Solution:

Update your game with the latest revision of software. For Sharkey's Shootout, Game ROM **U210, v2.06**, is required. For High Roller Casino, Game ROM **U210, v2.05**, is required.

Helpful Hint:

When replacing ROMs, use a proper flat tool to carefully remove the ROM. **Make sure** you are *prying up* the **ROM AND NOT** the IC SOCKET!!! When inserting the replacement ROM, ensure the Pins do not bend while inserting into the IC Socket. Note the position of the **NOTCH**. It should be in the same position as all the other ICs on the CPU Sound Board. **U210** is located just under the batteries (Upper Right Corner) on your CPU/Sound Board, in the Backbox.

Please *phone* or *eMail* with any questions or comments at the below numbers or address.



GAME ROM U210

Note the notch in the IC for correct positioning.

• 2020 Janice Ave • Melrose Park, IL 60160 • Tel 708-345-7700 (Option 1) • Toll-Free (USA/Canada) 1-800-542-5377 • Fax 708-345-7889 •